



# Results

[Back to Survey Info](#)  
[Back to Tabulate](#)

Filters Applied  
NONE - ALL record selected

## I am in grade

Response	Num Responses	Raw %	Adjusted %	20	40	60	80
5	93	24.28	24.28				
6	100	26.11	26.11				
7	91	23.76	23.76				
8	99	25.85	25.85				
No Response	0	0.00					

Total Responses : 383

## 1. I feel welcome at this school.

Response	Num Responses	Raw %	Adjusted %	20	40	60	80
Strongly Agree	105	27.42	28.00				
Agree	237	61.88	63.20				
Disagree	23	6.01	6.13				
Strongly Disagree	8	2.09	2.13				
Does Not Apply or Do Not Know	2	0.52	0.53				
No Response	8	2.09					

Total Responses : 383

## 2. I feel welcome in my classrooms.

Response	Num Responses	Raw %	Adjusted %	20	40	60	80
Strongly Agree	104	27.15	27.73				
Agree	221	57.70	58.93				
Disagree	34	8.88	9.07				
Strongly Disagree	11	2.87	2.93				
Does Not Apply or Do Not Know	5	1.31	1.33				
No Response	8	2.09					

Total Responses : 383

## 3. I feel safe at this school.

Response	Num Responses	Raw %	Adjusted %	20	40	60	80
Strongly Agree	186	48.56	48.95				
Agree	170	44.39	44.74				
Disagree	13	3.39	3.42				
Strongly Disagree	6	1.57	1.58				
Does Not Apply or Do Not Know	5	1.31	1.32				
No Response	3	0.78					

Total Responses : 383

## 4. I am satisfied with the way that administration handles my problems.

Response	Num Responses	Raw %	Adjusted %	20	40	60	80
Strongly Agree	42	10.97	11.11				
Agree	207	54.05	54.76				

Disagree	85	22.19	22.49		
Strongly Disagree	19	4.96	5.03		
Does Not Apply or Do Not Know	25	6.53	6.61		
No Response	5	1.31			

Total Responses : 383

**5. I can count on my teachers to listen to my side of the story and be fair.**

Response	Num Responses	Raw %	Adjusted %		20	40	60	80
Strongly Agree	69	18.02	18.30					
Agree	168	43.86	44.56					
Disagree	86	22.45	22.81					
Strongly Disagree	37	9.66	9.81					
Does Not Apply or Do Not Know	17	4.44	4.51					
No Response	6	1.57						

Total Responses : 383

**6. I am treated with respect by my teachers.**

Response	Num Responses	Raw %	Adjusted %		20	40	60	80
Strongly Agree	111	28.98	29.29					
Agree	203	53.00	53.56					
Disagree	49	12.79	12.93					
Strongly Disagree	12	3.13	3.17					
Does Not Apply or Do Not Know	4	1.04	1.06					
No Response	4	1.04						

Total Responses : 383

**7. I am treated with respect by Mr. Brownfield.**

Response	Num Responses	Raw %	Adjusted %		20	40	60	80
Strongly Agree	160	41.78	42.22					
Agree	167	43.60	44.06					
Disagree	25	6.53	6.60					
Strongly Disagree	14	3.66	3.69					
Does Not Apply or Do Not Know	13	3.39	3.43					
No Response	4	1.04						

Total Responses : 383

**8. I am treated with respect by Mr. Carner.**

Response	Num Responses	Raw %	Adjusted %		20	40	60	80
Strongly Agree	252	65.80	66.49					
Agree	113	29.50	29.82					
Disagree	6	1.57	1.58					
Strongly Disagree	4	1.04	1.06					
Does Not Apply or Do Not Know	4	1.04	1.06					
No Response	4	1.04						

Total Responses : 383

**9. I am treated with respect by the people who work in the cafeteria.**

Response	Num Responses	Raw %	Adjusted %		20	40	60	80
Strongly Agree	92	24.02	24.27					
Agree	200	52.22	52.77					
Disagree	51	13.32	13.46					

Strongly Disagree	26	6.79	6.86	
Does Not Apply or Do Not Know	10	2.61	2.64	
No Response	4	1.04		

Total Responses : 383

**10. I am treated with respect by the people who work in the office.**

Response	Num Responses	Raw %	Adjusted %	
Strongly Agree	246	64.23	65.08	
Agree	120	31.33	31.75	
Disagree	3	0.78	0.79	
Strongly Disagree	0	0.00	0.00	
Does Not Apply or Do Not Know	9	2.35	2.38	
No Response	5	1.31		

Total Responses : 383

**11. I am treated with respect by the school nurses.**

Response	Num Responses	Raw %	Adjusted %	
Strongly Agree	96	25.07	25.33	
Agree	158	41.25	41.69	
Disagree	62	16.19	16.36	
Strongly Disagree	25	6.53	6.60	
Does Not Apply or Do Not Know	38	9.92	10.03	
No Response	4	1.04		

Total Responses : 383

**12. I am treated with respect by the teachers in the mobile unit.**

Response	Num Responses	Raw %	Adjusted %	
Strongly Agree	33	8.62	8.82	
Agree	44	11.49	11.76	
Disagree	2	0.52	0.53	
Strongly Disagree	2	0.52	0.53	
Does Not Apply or Do Not Know	293	76.50	78.34	
No Response	9	2.35		

Total Responses : 383

**13. I am treated with respect by the school psychologist (Dr. Joe Rocchio).**

Response	Num Responses	Raw %	Adjusted %	
Strongly Agree	37	9.66	9.84	
Agree	24	6.27	6.38	
Disagree	1	0.26	0.27	
Strongly Disagree	1	0.26	0.27	
Does Not Apply or Do Not Know	313	81.72	83.24	
No Response	7	1.83		

Total Responses : 383

**14. I am treated with respect by the classroom aides.**

Response	Num Responses	Raw %	Adjusted %	
Strongly Agree	127	33.16	33.51	
Agree	138	36.03	36.41	
Disagree	3	0.78	0.79	
Strongly Disagree	1	0.26	0.26	

Does Not Apply or Do Not Know	110	28.72	29.02		
No Response	4	1.04			

Total Responses : 383

15. I am treated with respect by the specialist teachers (Music, Art, Gym, Spanish, Computer, Library, Enrichment Reading).

Response	Num Responses	Raw %	Adjusted %	20	40	60	80
Strongly Agree	80	20.89	21.22				
Agree	215	56.14	57.03				
Disagree	58	15.14	15.38				
Strongly Disagree	22	5.74	5.84				
Does Not Apply or Do Not Know	2	0.52	0.53				
No Response	6	1.57					

Total Responses : 383

16. I am treated with respect by the students at this school.

Response	Num Responses	Raw %	Adjusted %	20	40	60	80
Strongly Agree	67	17.49	17.82				
Agree	217	56.66	57.71				
Disagree	71	18.54	18.88				
Strongly Disagree	19	4.96	5.05				
Does Not Apply or Do Not Know	2	0.52	0.53				
No Response	7	1.83					

Total Responses : 383

17. I am happy with the way that students behave in class.

Response	Num Responses	Raw %	Adjusted %	20	40	60	80
Strongly Agree	71	18.54	19.14				
Agree	166	43.34	44.74				
Disagree	101	26.37	27.22				
Strongly Disagree	27	7.05	7.28				
Does Not Apply or Do Not Know	6	1.57	1.62				
No Response	12	3.13					

Total Responses : 383

18. I am happy with the way that students behave in school.

Response	Num Responses	Raw %	Adjusted %	20	40	60	80
Strongly Agree	65	16.97	17.29				
Agree	206	53.79	54.79				
Disagree	81	21.15	21.54				
Strongly Disagree	20	5.22	5.32				
Does Not Apply or Do Not Know	4	1.04	1.06				
No Response	7	1.83					

Total Responses : 383

19. I am happy with the way that school rules are enforced.

Response	Num Responses	Raw %	Adjusted %	20	40	60	80
Strongly Agree	41	10.70	10.88				
Agree	143	37.34	37.93				
Disagree	120	31.33	31.83				
Strongly Disagree	69	18.02	18.30				
Does Not Apply or Do Not Know	4	1.04	1.06				

No Response	6	1.57		
-------------	---	------	--	--

Total Responses : 383

**20. I am happy with how well students do what is expected without being told.**

Response	Num Responses	Raw %	Adjusted %		20	40	60	80
Strongly Agree	37	9.66	9.81					
Agree	190	49.61	50.40					
Disagree	95	24.80	25.20					
Strongly Disagree	36	9.40	9.55					
Does Not Apply or Do Not Know	19	4.96	5.04					
No Response	6	1.57						

Total Responses : 383

**21. I like this school.**

Response	Num Responses	Raw %	Adjusted %		20	40	60	80
Strongly Agree	112	29.24	29.71					
Agree	185	48.30	49.07					
Disagree	40	10.44	10.61					
Strongly Disagree	34	8.88	9.02					
Does Not Apply or Do Not Know	6	1.57	1.59					
No Response	6	1.57						

Total Responses : 383

**22. I think that this is a good school.**

Response	Num Responses	Raw %	Adjusted %		20	40	60	80
Strongly Agree	123	32.11	32.89					
Agree	199	51.96	53.21					
Disagree	29	7.57	7.75					
Strongly Disagree	17	4.44	4.55					
Does Not Apply or Do Not Know	6	1.57	1.60					
No Response	9	2.35						

Total Responses : 383

**23. I am happy with the way students treat each other.**

Response	Num Responses	Raw %	Adjusted %		20	40	60	80
Strongly Agree	35	9.14	9.28					
Agree	170	44.39	45.09					
Disagree	120	31.33	31.83					
Strongly Disagree	45	11.75	11.94					
Does Not Apply or Do Not Know	7	1.83	1.86					
No Response	6	1.57						

Total Responses : 383

**24. It's easy to make friends at my school.**

Response	Num Responses	Raw %	Adjusted %		20	40	60	80
Strongly Agree	98	25.59	25.93					
Agree	182	47.52	48.15					
Disagree	71	18.54	18.78					
Strongly Disagree	21	5.48	5.56					
Does Not Apply or Do Not Know	6	1.57	1.59					
No Response	5	1.31						

Total Responses : 383

25. I am involved in a St. Albert the Great School extra-curricular activity (music, drama, sports, Pow of the Pen, yearbook, Geography Bee, Classroom of Champions, Morning Show, etc.).

Response	Num Responses	Raw %	Adjusted %		20	40	60	80
Yes	330	86.16	87.77					
No	46	12.01	12.23					
No Response	7	1.83						

Total Responses : 383

26. I am happy with the number of extra-curricular activities I can participate in.

Response	Num Responses	Raw %	Adjusted %		20	40	60	80
Strongly Agree	150	39.16	40.00					
Agree	174	45.43	46.40					
Disagree	28	7.31	7.47					
Strongly Disagree	10	2.61	2.67					
Does Not Apply or Do Not Know	13	3.39	3.47					
No Response	8	2.09						

Total Responses : 383

27. I am happy with the amount that students can plan and take part in school events and activities.

Response	Num Responses	Raw %	Adjusted %		20	40	60	80
Strongly Agree	90	23.50	24.00					
Agree	223	58.22	59.47					
Disagree	37	9.66	9.87					
Strongly Disagree	12	3.13	3.20					
Does Not Apply or Do Not Know	13	3.39	3.47					
No Response	8	2.09						

Total Responses : 383

28. My classes challenge me.

Response	Num Responses	Raw %	Adjusted %		20	40	60	80
Strongly Agree	68	17.75	17.99					
Agree	247	64.49	65.34					
Disagree	45	11.75	11.90					
Strongly Disagree	12	3.13	3.17					
Does Not Apply or Do Not Know	6	1.57	1.59					
No Response	5	1.31						

Total Responses : 383

29. My classes meet my needs.

Response	Num Responses	Raw %	Adjusted %		20	40	60	80
Strongly Agree	57	14.88	15.12					
Agree	275	71.80	72.94					
Disagree	31	8.09	8.22					
Strongly Disagree	6	1.57	1.59					
Does Not Apply or Do Not Know	8	2.09	2.12					
No Response	6	1.57						

Total Responses : 383

30. I have opportunities to choose my own projects.

Response	Num Responses	Raw %	Adjusted %		20	40	60	80
Strongly Agree	18	4.70	4.79					
Agree	124	32.38	32.98					

Disagree	147	38.38	39.10	
Strongly Disagree	75	19.58	19.95	
Does Not Apply or Do Not Know	12	3.13	3.19	
No Response	7	1.83		

Total Responses : 383

**31. I feel like I am in charge of what I learn.**

Response	Num Responses	Raw %	Adjusted %	
Strongly Agree	25	6.53	6.67	
Agree	116	30.29	30.93	
Disagree	147	38.38	39.20	
Strongly Disagree	74	19.32	19.73	
Does Not Apply or Do Not Know	13	3.39	3.47	
No Response	8	2.09		

Total Responses : 383

**32. My teachers make an effort to show me another way to learn the material if I don't understand the time.**

Response	Num Responses	Raw %	Adjusted %	
Strongly Agree	101	26.37	26.86	
Agree	190	49.61	50.53	
Disagree	57	14.88	15.16	
Strongly Disagree	18	4.70	4.79	
Does Not Apply or Do Not Know	10	2.61	2.66	
No Response	7	1.83		

Total Responses : 383

**33. I understand how to apply what I learn at school to real-life situations.**

Response	Num Responses	Raw %	Adjusted %	
Strongly Agree	61	15.93	16.22	
Agree	214	55.87	56.91	
Disagree	66	17.23	17.55	
Strongly Disagree	21	5.48	5.59	
Does Not Apply or Do Not Know	14	3.66	3.72	
No Response	7	1.83		

Total Responses : 383

**34. I feel successful at this school.**

Response	Num Responses	Raw %	Adjusted %	
Strongly Agree	114	29.77	30.48	
Agree	214	55.87	57.22	
Disagree	33	8.62	8.82	
Strongly Disagree	7	1.83	1.87	
Does Not Apply or Do Not Know	6	1.57	1.60	
No Response	9	2.35		

Total Responses : 383

**35. This school is preparing me for high school.**

Response	Num Responses	Raw %	Adjusted %	
Strongly Agree	116	30.29	31.10	
Agree	171	44.65	45.84	
Disagree	48	12.53	12.87	

Strongly Disagree	19	4.96	5.09	
Does Not Apply or Do Not Know	19	4.96	5.09	
No Response	10	2.61		

Total Responses : 383

**36. Homework helps me to learn.**

Response	Num Responses	Raw %	Adjusted %	
Strongly Agree	43	11.23	11.56	
Agree	195	50.91	52.42	
Disagree	67	17.49	18.01	
Strongly Disagree	60	15.67	16.13	
Does Not Apply or Do Not Know	7	1.83	1.88	
No Response	11	2.87		

Total Responses : 383

**37. There is an appropriate amount of project work.**

Response	Num Responses	Raw %	Adjusted %	
Strongly Agree	47	12.27	12.63	
Agree	214	55.87	57.53	
Disagree	66	17.23	17.74	
Strongly Disagree	29	7.57	7.80	
Does Not Apply or Do Not Know	16	4.18	4.30	
No Response	11	2.87		

Total Responses : 383

**38. Projects require too much help from my parents.**

Response	Num Responses	Raw %	Adjusted %	
Strongly Agree	30	7.83	8.00	
Agree	66	17.23	17.60	
Disagree	206	53.79	54.93	
Strongly Disagree	68	17.75	18.13	
Does Not Apply or Do Not Know	5	1.31	1.33	
No Response	8	2.09		

Total Responses : 383

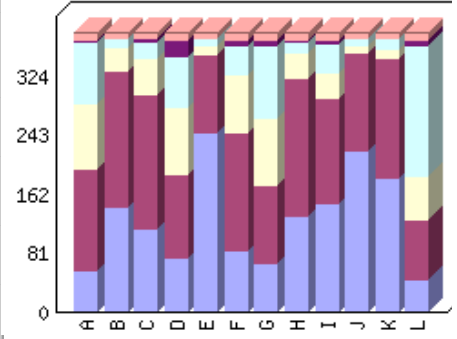
**39. This school encourages me to work to the best of my ability.**

Response	Num Responses	Raw %	Adjusted %	
Strongly Agree	108	28.20	28.72	
Agree	217	56.66	57.71	
Disagree	36	9.40	9.57	
Strongly Disagree	10	2.61	2.66	
Does Not Apply or Do Not Know	5	1.31	1.33	
No Response	7	1.83		

Total Responses : 383

**40. I have learned new and useful things in:**

Category	Strongly Agree	Agree	Disagree	Strongly Disagree	Does Not Apply or Do Not Know	NR	Legend
Art	56	141	90	83	4	9	A
Computer	143	188	32	12	1	7	B
Language Arts / English	114	185	50	22	4	8	C
Library Skills	73	116	92	70	23	9	D
Mathematics	245	109	11	11	1	6	E
Music	84	163	78	42	7	9	F
Physical Education	65	108	94	100	7	9	G
Reading / Literature	132	188	37	14	2	10	H
Religion	148	146	34	40	6	9	I
Science / Health	221	134	12	8	0	8	J
Social Studies	184	164	13	14	0	8	K
Spanish	44	83	60	179	8	9	L
Color							



Total Responses : 383

**Art**

Response	Num Responses	Raw %	Adjusted %	
Strongly Agree	56	14.62	14.97	<input type="text"/>
Agree	141	36.81	37.70	<input type="text"/>
Disagree	90	23.50	24.06	<input type="text"/>
Strongly Disagree	83	21.67	22.19	<input type="text"/>
Does Not Apply or Do Not Know	4	1.04	1.07	<input type="text"/>
No Response	9	2.35		<input type="text"/>

Total Responses : 383

**Computer**

Response	Num Responses	Raw %	Adjusted %	
Strongly Agree	143	37.34	38.03	<input type="text"/>
Agree	188	49.09	50.00	<input type="text"/>
Disagree	32	8.36	8.51	<input type="text"/>
Strongly Disagree	12	3.13	3.19	<input type="text"/>
Does Not Apply or Do Not Know	1	0.26	0.27	<input type="text"/>
No Response	7	1.83		<input type="text"/>

Total Responses : 383

**Language Arts / English**

Response	Num Responses	Raw %	Adjusted %	
Strongly Agree	114	29.77	30.40	<input type="text"/>
Agree	185	48.30	49.33	<input type="text"/>
Disagree	50	13.05	13.33	<input type="text"/>
Strongly Disagree	22	5.74	5.87	<input type="text"/>

Does Not Apply or Do Not Know	4	1.04	1.07	
No Response	8	2.09		

Total Responses : 383

**Library Skills**

Response	Num Responses	Raw %	Adjusted %	
Strongly Agree	73	19.06	19.52	
Agree	116	30.29	31.02	
Disagree	92	24.02	24.60	
Strongly Disagree	70	18.28	18.72	
Does Not Apply or Do Not Know	23	6.01	6.15	
No Response	9	2.35		

Total Responses : 383

**Mathematics**

Response	Num Responses	Raw %	Adjusted %	
Strongly Agree	245	63.97	64.99	
Agree	109	28.46	28.91	
Disagree	11	2.87	2.92	
Strongly Disagree	11	2.87	2.92	
Does Not Apply or Do Not Know	1	0.26	0.27	
No Response	6	1.57		

Total Responses : 383

**Music**

Response	Num Responses	Raw %	Adjusted %	
Strongly Agree	84	21.93	22.46	
Agree	163	42.56	43.58	
Disagree	78	20.37	20.86	
Strongly Disagree	42	10.97	11.23	
Does Not Apply or Do Not Know	7	1.83	1.87	
No Response	9	2.35		

Total Responses : 383

**Physical Education**

Response	Num Responses	Raw %	Adjusted %	
Strongly Agree	65	16.97	17.38	
Agree	108	28.20	28.88	
Disagree	94	24.54	25.13	
Strongly Disagree	100	26.11	26.74	
Does Not Apply or Do Not Know	7	1.83	1.87	
No Response	9	2.35		

Total Responses : 383

**Reading / Literature**

Response	Num Responses	Raw %	Adjusted %	
Strongly Agree	132	34.46	35.39	
Agree	188	49.09	50.40	
Disagree	37	9.66	9.92	
Strongly Disagree	14	3.66	3.75	
Does Not Apply or Do Not Know	2	0.52	0.54	

No Response	10	2.61		
-------------	----	------	--	--

Total Responses : 383

**Religion**

Response	Num Responses	Raw %	Adjusted %		20	40	60	80
Strongly Agree	148	38.64	39.57					
Agree	146	38.12	39.04					
Disagree	34	8.88	9.09					
Strongly Disagree	40	10.44	10.70					
Does Not Apply or Do Not Know	6	1.57	1.60					
No Response	9	2.35						

Total Responses : 383

**Science / Health**

Response	Num Responses	Raw %	Adjusted %		20	40	60	80
Strongly Agree	221	57.70	58.93					
Agree	134	34.99	35.73					
Disagree	12	3.13	3.20					
Strongly Disagree	8	2.09	2.13					
Does Not Apply or Do Not Know	0	0.00	0.00					
No Response	8	2.09						

Total Responses : 383

**Social Studies**

Response	Num Responses	Raw %	Adjusted %		20	40	60	80
Strongly Agree	184	48.04	49.07					
Agree	164	42.82	43.73					
Disagree	13	3.39	3.47					
Strongly Disagree	14	3.66	3.73					
Does Not Apply or Do Not Know	0	0.00	0.00					
No Response	8	2.09						

Total Responses : 383

**Spanish**

Response	Num Responses	Raw %	Adjusted %		20	40	60	80
Strongly Agree	44	11.49	11.76					
Agree	83	21.67	22.19					
Disagree	60	15.67	16.04					
Strongly Disagree	179	46.74	47.86					
Does Not Apply or Do Not Know	8	2.09	2.14					
No Response	9	2.35						

Total Responses : 383

**41. It is easy for me to use the school library.**

Response	Num Responses	Raw %	Adjusted %		20	40	60	80
Strongly Agree	138	36.03	36.70					
Agree	200	52.22	53.19					
Disagree	21	5.48	5.59					
Strongly Disagree	11	2.87	2.93					
Does Not Apply or Do Not Know	6	1.57	1.60					
No Response	7	1.83						

Total Responses : 383

**42. It is easy for me to use the school computer lab.**

Response	Num Responses	Raw %	Adjusted %		20	40	60	80
Strongly Agree	134	34.99	35.83					
Agree	202	52.74	54.01					
Disagree	29	7.57	7.75					
Strongly Disagree	6	1.57	1.60					
Does Not Apply or Do Not Know	3	0.78	0.80					
No Response	9	2.35						

Total Responses : 383

**43. I am happy with the selection of books and other materials in the school library.**

Response	Num Responses	Raw %	Adjusted %		20	40	60	80
Strongly Agree	76	19.84	20.38					
Agree	181	47.26	48.53					
Disagree	79	20.63	21.18					
Strongly Disagree	31	8.09	8.31					
Does Not Apply or Do Not Know	6	1.57	1.61					
No Response	10	2.61						

Total Responses : 383

**44. The school grounds are kept clean.**

Response	Num Responses	Raw %	Adjusted %		20	40	60	80
Strongly Agree	93	24.28	25.14					
Agree	213	55.61	57.57					
Disagree	46	12.01	12.43					
Strongly Disagree	11	2.87	2.97					
Does Not Apply or Do Not Know	7	1.83	1.89					
No Response	13	3.39						

Total Responses : 383

**45. The school buildings are kept clean and in good repair.**

Response	Num Responses	Raw %	Adjusted %		20	40	60	80
Strongly Agree	111	28.98	29.68					
Agree	204	53.26	54.55					
Disagree	47	12.27	12.57					
Strongly Disagree	7	1.83	1.87					
Does Not Apply or Do Not Know	5	1.31	1.34					
No Response	9	2.35						

Total Responses : 383

**46. The classroom supplies and materials help me learn.**

Response	Num Responses	Raw %	Adjusted %		20	40	60	80
Strongly Agree	68	17.75	18.38					
Agree	227	59.27	61.35					
Disagree	49	12.79	13.24					
Strongly Disagree	12	3.13	3.24					
Does Not Apply or Do Not Know	14	3.66	3.78					
No Response	13	3.39						

Total Responses : 383

**47. In general, I am happy about the school buildings, supplies, and upkeep at my school.**

Response	Num Responses	Raw %	Adjusted %		20	40	60	80
Strongly Agree	79	20.63	21.07					
Agree	245	63.97	65.33					
Disagree	39	10.18	10.40					
Strongly Disagree	9	2.35	2.40					
Does Not Apply or Do Not Know	3	0.78	0.80					
No Response	8	2.09						

Total Responses : 383

**48. Students of this school obtain a good understanding of their Catholic faith.**

Response	Num Responses	Raw %	Adjusted %		20	40	60	80
Strongly Agree	83	21.67	22.19					
Agree	204	53.26	54.55					
Disagree	68	17.75	18.18					
Strongly Disagree	16	4.18	4.28					
Does Not Apply or Do Not Know	3	0.78	0.80					
No Response	9	2.35						

Total Responses : 383

**49. Being a Catholic school is important to everyone at this school: students, parents, faculty and administration.**

Response	Num Responses	Raw %	Adjusted %		20	40	60	80
Strongly Agree	111	28.98	29.60					
Agree	181	47.26	48.27					
Disagree	61	15.93	16.27					
Strongly Disagree	15	3.92	4.00					
Does Not Apply or Do Not Know	7	1.83	1.87					
No Response	8	2.09						

Total Responses : 383

**50. Our school is preparing students to be good Catholics.**

Response	Num Responses	Raw %	Adjusted %		20	40	60	80
Strongly Agree	117	30.55	31.37					
Agree	199	51.96	53.35					
Disagree	45	11.75	12.06					
Strongly Disagree	9	2.35	2.41					
Does Not Apply or Do Not Know	3	0.78	0.80					
No Response	10	2.61						

Total Responses : 383

**51. The school liturgies are helpful and meaningful for the students.**

Response	Num Responses	Raw %	Adjusted %		20	40	60	80
Strongly Agree	87	22.72	23.51					
Agree	196	51.17	52.97					
Disagree	59	15.40	15.95					
Strongly Disagree	15	3.92	4.05					
Does Not Apply or Do Not Know	13	3.39	3.51					
No Response	13	3.39						

Total Responses : 383

**52. At this school, students have the opportunity to talk to adults about their beliefs and values.**

Response	Num Responses	Raw %	Adjusted %		20	40	60	80
----------	---------------	-------	------------	--	----	----	----	----

Strongly Agree	53	13.84	14.29	
Agree	151	39.43	40.70	
Disagree	111	28.98	29.92	
Strongly Disagree	45	11.75	12.13	
Does Not Apply or Do Not Know	11	2.87	2.96	
No Response	12	3.13		

Total Responses : 383

**53. Religion class is seen as important by the students of this school.**

Response	Num Responses	Raw %	Adjusted %	
Strongly Agree	50	13.05	13.51	
Agree	140	36.55	37.84	
Disagree	115	30.03	31.08	
Strongly Disagree	53	13.84	14.32	
Does Not Apply or Do Not Know	12	3.13	3.24	
No Response	13	3.39		

Total Responses : 383

**54. Religion class is seen as important by the parents of this school.**

Response	Num Responses	Raw %	Adjusted %	
Strongly Agree	110	28.72	29.97	
Agree	182	47.52	49.59	
Disagree	32	8.36	8.72	
Strongly Disagree	16	4.18	4.36	
Does Not Apply or Do Not Know	27	7.05	7.36	
No Response	16	4.18		

Total Responses : 383

**55. Religion class is seen as important by the faculty of this school.**

Response	Num Responses	Raw %	Adjusted %	
Strongly Agree	120	31.33	32.52	
Agree	171	44.65	46.34	
Disagree	37	9.66	10.03	
Strongly Disagree	10	2.61	2.71	
Does Not Apply or Do Not Know	31	8.09	8.40	
No Response	14	3.66		

Total Responses : 383

**56. I believe that the school follows its' mission.**

Response	Num Responses	Raw %	Adjusted %	
Strongly Agree	71	18.54	19.03	
Agree	204	53.26	54.69	
Disagree	64	16.71	17.16	
Strongly Disagree	17	4.44	4.56	
Does Not Apply or Do Not Know	17	4.44	4.56	
No Response	10	2.61		

Total Responses : 383

**57. I am pleased with the overall direction of the school.**

Response	Num Responses	Raw %	Adjusted %	
Strongly Agree	60	15.67	16.17	

Agree	235	61.36	63.34		
Disagree	46	12.01	12.40		
Strongly Disagree	19	4.96	5.12		
Does Not Apply or Do Not Know	11	2.87	2.96		
No Response	12	3.13			

Total Responses : 383

58. I am aware that the school created a school improvement plan in 2006 and is currently following it

Response	Num Responses	Raw %	Adjusted %	20	40	60	80
Strongly Agree	35	9.14	9.46				
Agree	125	32.64	33.78				
Disagree	71	18.54	19.19				
Strongly Disagree	52	13.58	14.05				
Does Not Apply or Do Not Know	87	22.72	23.51				
No Response	13	3.39					

Total Responses : 383

59. I evaluate my own written work according to a teacher provided rubric.

Response	Num Responses	Raw %	Adjusted %	20	40	60	80
Strongly Agree	57	14.88	15.32				
Agree	231	60.31	62.10				
Disagree	41	10.70	11.02				
Strongly Disagree	9	2.35	2.42				
Does Not Apply or Do Not Know	34	8.88	9.14				
No Response	11	2.87					

Total Responses : 383

60. I know how to edit written work.

Response	Num Responses	Raw %	Adjusted %	20	40	60	80
Strongly Agree	85	22.19	23.04				
Agree	236	61.62	63.96				
Disagree	25	6.53	6.78				
Strongly Disagree	9	2.35	2.44				
Does Not Apply or Do Not Know	14	3.66	3.79				
No Response	14	3.66					

Total Responses : 383

61. I edit other classmate's written work.

Response	Num Responses	Raw %	Adjusted %	20	40	60	80
Strongly Agree	56	14.62	15.14				
Agree	178	46.48	48.11				
Disagree	80	20.89	21.62				
Strongly Disagree	31	8.09	8.38				
Does Not Apply or Do Not Know	25	6.53	6.76				
No Response	13	3.39					

Total Responses : 383

62. I select work to be placed in my writing portfolio.

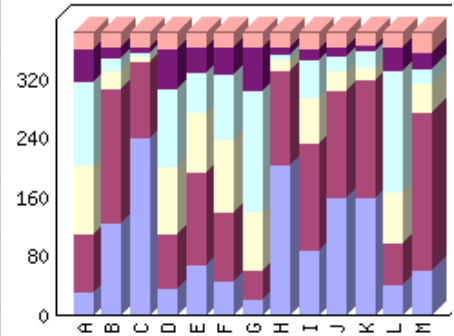
Response	Num Responses	Raw %	Adjusted %	20	40	60	80
Strongly Agree	24	6.27	6.52				
Agree	101	26.37	27.45				

<b>Disagree</b>	115	30.03	31.25	
<b>Strongly Disagree</b>	70	18.28	19.02	
<b>Does Not Apply or Do Not Know</b>	58	15.14	15.76	
<b>No Response</b>	15	3.92		

**Total Responses : 383**

**63. This school year, I have used the writing process and completed a final written product in:**

Category	Strongly Agree	Agree	Disagree	Strongly Disagree	Does Not Apply or Do Not Know	NR	Legend
Art	30	80	93	114	44	22	A
Computer	125	182	24	18	15	19	B
Language Arts / English	240	105	6	7	6	19	C
Library Skills	35	75	92	106	54	21	D
Mathematics	69	124	83	53	35	19	E
Music	46	94	98	89	36	20	F
Physical Education	20	40	79	167	57	20	G
Reading / Literature	203	130	14	8	8	20	H
Religion	87	147	61	51	16	21	I
Science	159	147	27	19	12	19	J
Social Studies	160	160	17	22	7	17	K
Spanish	41	56	69	166	32	19	L
64. I know and understand what Catholic social justice teachings are.	60	215	40	20	23	25	M
Color							



**Total Responses : 383**

**Art**

Response	Num Responses	Raw %	Adjusted %	
<b>Strongly Agree</b>	30	7.83	8.31	
<b>Agree</b>	80	20.89	22.16	
<b>Disagree</b>	93	24.28	25.76	
<b>Strongly Disagree</b>	114	29.77	31.58	
<b>Does Not Apply or Do Not Know</b>	44	11.49	12.19	
<b>No Response</b>	22	5.74		

**Total Responses : 383**

**Computer**

Response	Num Responses	Raw %	Adjusted %	
<b>Strongly Agree</b>	125	32.64	34.34	

Agree	182	47.52	50.00		
Disagree	24	6.27	6.59		
Strongly Disagree	18	4.70	4.95		
Does Not Apply or Do Not Know	15	3.92	4.12		
No Response	19	4.96			

Total Responses : 383

#### Language Arts / English

Response	Num Responses	Raw %	Adjusted %		
Strongly Agree	240	62.66	65.93		
Agree	105	27.42	28.85		
Disagree	6	1.57	1.65		
Strongly Disagree	7	1.83	1.92		
Does Not Apply or Do Not Know	6	1.57	1.65		
No Response	19	4.96			

Total Responses : 383

#### Library Skills

Response	Num Responses	Raw %	Adjusted %		
Strongly Agree	35	9.14	9.67		
Agree	75	19.58	20.72		
Disagree	92	24.02	25.41		
Strongly Disagree	106	27.68	29.28		
Does Not Apply or Do Not Know	54	14.10	14.92		
No Response	21	5.48			

Total Responses : 383

#### Mathematics

Response	Num Responses	Raw %	Adjusted %		
Strongly Agree	69	18.02	18.96		
Agree	124	32.38	34.07		
Disagree	83	21.67	22.80		
Strongly Disagree	53	13.84	14.56		
Does Not Apply or Do Not Know	35	9.14	9.62		
No Response	19	4.96			

Total Responses : 383

#### Music

Response	Num Responses	Raw %	Adjusted %		
Strongly Agree	46	12.01	12.67		
Agree	94	24.54	25.90		
Disagree	98	25.59	27.00		
Strongly Disagree	89	23.24	24.52		
Does Not Apply or Do Not Know	36	9.40	9.92		
No Response	20	5.22			

Total Responses : 383

#### Physical Education

Response	Num Responses	Raw %	Adjusted %		
Strongly Agree	20	5.22	5.51		
Agree	40	10.44	11.02		

Disagree	79	20.63	21.76	
Strongly Disagree	167	43.60	46.01	
Does Not Apply or Do Not Know	57	14.88	15.70	
No Response	20	5.22		

Total Responses : 383

#### Reading / Literature

Response	Num Responses	Raw %	Adjusted %	
Strongly Agree	203	53.00	55.92	
Agree	130	33.94	35.81	
Disagree	14	3.66	3.86	
Strongly Disagree	8	2.09	2.20	
Does Not Apply or Do Not Know	8	2.09	2.20	
No Response	20	5.22		

Total Responses : 383

#### Religion

Response	Num Responses	Raw %	Adjusted %	
Strongly Agree	87	22.72	24.03	
Agree	147	38.38	40.61	
Disagree	61	15.93	16.85	
Strongly Disagree	51	13.32	14.09	
Does Not Apply or Do Not Know	16	4.18	4.42	
No Response	21	5.48		

Total Responses : 383

#### Science

Response	Num Responses	Raw %	Adjusted %	
Strongly Agree	159	41.51	43.68	
Agree	147	38.38	40.38	
Disagree	27	7.05	7.42	
Strongly Disagree	19	4.96	5.22	
Does Not Apply or Do Not Know	12	3.13	3.30	
No Response	19	4.96		

Total Responses : 383

#### Social Studies

Response	Num Responses	Raw %	Adjusted %	
Strongly Agree	160	41.78	43.72	
Agree	160	41.78	43.72	
Disagree	17	4.44	4.64	
Strongly Disagree	22	5.74	6.01	
Does Not Apply or Do Not Know	7	1.83	1.91	
No Response	17	4.44		

Total Responses : 383

#### Spanish

Response	Num Responses	Raw %	Adjusted %	
Strongly Agree	41	10.70	11.26	
Agree	56	14.62	15.38	
Disagree	69	18.02	18.96	

<b>Strongly Disagree</b>	166	43.34	45.60	
<b>Does Not Apply or Do Not Know</b>	32	8.36	8.79	
<b>No Response</b>	19	4.96		

**Total Responses : 383**

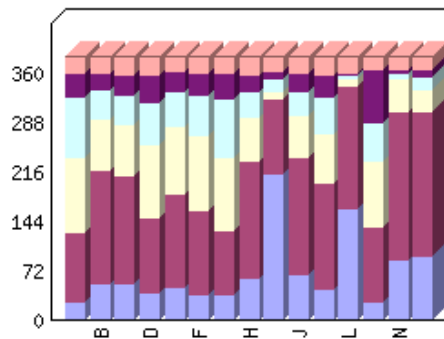
**64. I know and understand what Catholic social justice teachings are.**

<b>Response</b>	<b>Num Responses</b>	<b>Raw %</b>	<b>Adjusted %</b>	
<b>Strongly Agree</b>	60	15.67	16.76	
<b>Agree</b>	215	56.14	60.06	
<b>Disagree</b>	40	10.44	11.17	
<b>Strongly Disagree</b>	20	5.22	5.59	
<b>Does Not Apply or Do Not Know</b>	23	6.01	6.42	
<b>No Response</b>	25	6.53		

**Total Responses : 383**

**65. We discuss Catholic social justice principles in:**

Category	Strongly Agree	Agree	Disagree	Strongly Disagree	Does Not Apply or Do Not Know	NR	Legend
Art	25	103	109	88	35	23	A
Computer	51	166	74	44	24	24	B
Language Arts / English	53	156	74	43	31	26	C
Library Skills	39	109	107	62	39	27	D
Mathematics	48	136	97	50	30	22	E
Music	35	124	110	57	32	25	F
Physical Education	35	95	107	84	39	23	G
Reading / Literature	60	171	64	38	23	27	H
Religion	213	109	9	20	11	21	I
Science	65	170	63	34	27	24	J
Social Studies	43	155	73	53	33	26	K
66. I believe serving others is an important part of being Catholic.	161	180	10	4	4	24	L
67. The staff at our school listens to my opinion when planning service projects.	26	109	96	57	77	18	M
68. I enjoy serving others.	87	216	47	9	5	19	N
69. This school promotes serving others.	92	211	33	17	12	18	O
Color							



Total Responses : 383

**Art**

Response	Num Responses	Raw %	Adjusted %	
Strongly Agree	25	6.53	6.94	
Agree	103	26.89	28.61	
Disagree	109	28.46	30.28	
Strongly Disagree	88	22.98	24.44	
Does Not Apply or Do Not Know	35	9.14	9.72	
No Response	23	6.01		

Total Responses : 383

**Computer**

Response	Num Responses	Raw %	Adjusted %		20	40	60	80
Strongly Agree	51	13.32	14.21					
Agree	166	43.34	46.24					
Disagree	74	19.32	20.61					
Strongly Disagree	44	11.49	12.26					
Does Not Apply or Do Not Know	24	6.27	6.69					
No Response	24	6.27						

Total Responses : 383

**Language Arts / English**

Response	Num Responses	Raw %	Adjusted %		20	40	60	80
Strongly Agree	53	13.84	14.85					
Agree	156	40.73	43.70					
Disagree	74	19.32	20.73					
Strongly Disagree	43	11.23	12.04					
Does Not Apply or Do Not Know	31	8.09	8.68					
No Response	26	6.79						

Total Responses : 383

**Library Skills**

Response	Num Responses	Raw %	Adjusted %		20	40	60	80
Strongly Agree	39	10.18	10.96					
Agree	109	28.46	30.62					
Disagree	107	27.94	30.06					
Strongly Disagree	62	16.19	17.42					
Does Not Apply or Do Not Know	39	10.18	10.96					
No Response	27	7.05						

Total Responses : 383

**Mathematics**

Response	Num Responses	Raw %	Adjusted %		20	40	60	80
Strongly Agree	48	12.53	13.30					
Agree	136	35.51	37.67					
Disagree	97	25.33	26.87					
Strongly Disagree	50	13.05	13.85					
Does Not Apply or Do Not Know	30	7.83	8.31					
No Response	22	5.74						

Total Responses : 383

**Music**

Response	Num Responses	Raw %	Adjusted %		20	40	60	80
Strongly Agree	35	9.14	9.78					
Agree	124	32.38	34.64					
Disagree	110	28.72	30.73					
Strongly Disagree	57	14.88	15.92					
Does Not Apply or Do Not Know	32	8.36	8.94					
No Response	25	6.53						

Total Responses : 383

**Physical Education**

Response	Num Responses	Raw %	Adjusted %	
Strongly Agree	35	9.14	9.72	
Agree	95	24.80	26.39	
Disagree	107	27.94	29.72	
Strongly Disagree	84	21.93	23.33	
Does Not Apply or Do Not Know	39	10.18	10.83	
No Response	23	6.01		

Total Responses : 383

**Reading / Literature**

Response	Num Responses	Raw %	Adjusted %	
Strongly Agree	60	15.67	16.85	
Agree	171	44.65	48.03	
Disagree	64	16.71	17.98	
Strongly Disagree	38	9.92	10.67	
Does Not Apply or Do Not Know	23	6.01	6.46	
No Response	27	7.05		

Total Responses : 383

**Religion**

Response	Num Responses	Raw %	Adjusted %	
Strongly Agree	213	55.61	58.84	
Agree	109	28.46	30.11	
Disagree	9	2.35	2.49	
Strongly Disagree	20	5.22	5.52	
Does Not Apply or Do Not Know	11	2.87	3.04	
No Response	21	5.48		

Total Responses : 383

**Science**

Response	Num Responses	Raw %	Adjusted %	
Strongly Agree	65	16.97	18.11	
Agree	170	44.39	47.35	
Disagree	63	16.45	17.55	
Strongly Disagree	34	8.88	9.47	
Does Not Apply or Do Not Know	27	7.05	7.52	
No Response	24	6.27		

Total Responses : 383

**Social Studies**

Response	Num Responses	Raw %	Adjusted %	
Strongly Agree	43	11.23	12.04	
Agree	155	40.47	43.42	
Disagree	73	19.06	20.45	
Strongly Disagree	53	13.84	14.85	
Does Not Apply or Do Not Know	33	8.62	9.24	
No Response	26	6.79		

Total Responses : 383

**66. I believe serving others is an important part of being Catholic.**

Response	Num Responses	Raw %	Adjusted %	
Strongly Agree	161	42.04	44.85	

Agree	180	47.00	50.14		
Disagree	10	2.61	2.79		
Strongly Disagree	4	1.04	1.11		
Does Not Apply or Do Not Know	4	1.04	1.11		
No Response	24	6.27			

Total Responses : 383

**67. The staff at our school listens to my opinion when planning service projects.**

Response	Num Responses	Raw %	Adjusted %		20	40	60	80
Strongly Agree	26	6.79	7.12					
Agree	109	28.46	29.86					
Disagree	96	25.07	26.30					
Strongly Disagree	57	14.88	15.62					
Does Not Apply or Do Not Know	77	20.10	21.10					
No Response	18	4.70						

Total Responses : 383

**68. I enjoy serving others.**

Response	Num Responses	Raw %	Adjusted %		20	40	60	80
Strongly Agree	87	22.72	23.90					
Agree	216	56.40	59.34					
Disagree	47	12.27	12.91					
Strongly Disagree	9	2.35	2.47					
Does Not Apply or Do Not Know	5	1.31	1.37					
No Response	19	4.96						

Total Responses : 383

**69. This school promotes serving others.**

Response	Num Responses	Raw %	Adjusted %		20	40	60	80
Strongly Agree	92	24.02	25.21					
Agree	211	55.09	57.81					
Disagree	33	8.62	9.04					
Strongly Disagree	17	4.44	4.66					
Does Not Apply or Do Not Know	12	3.13	3.29					
No Response	18	4.70						

Total Responses : 383